

Green Bag Lady Bag Pattern



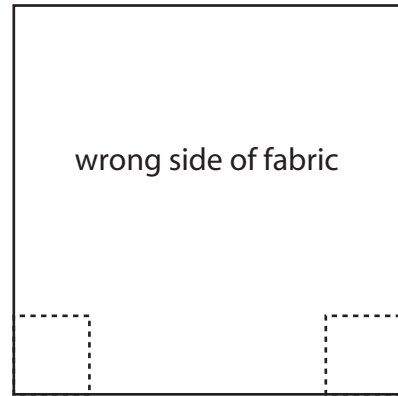
www.greenbaglady.org



Green Bag Lady
Powered by Elna
Sewing Machines

Step 1

Cut 2--18" x 18" squares of fabric

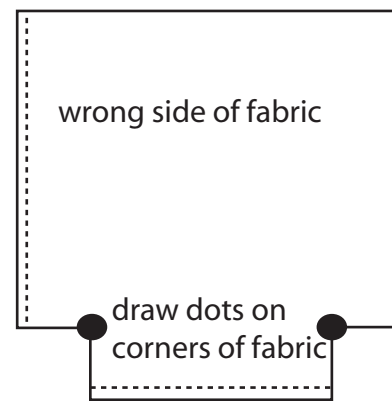


Cut a 2.5 inch square out of the bottom corners on both sides

Step 2

Put the 2 pieces together right sides facing

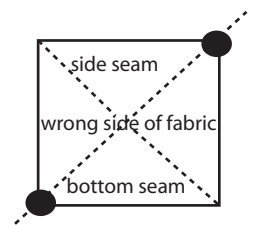
Sew all sides 1/4 in from edge



Step 3

•Helpful hint: pinch dots in both hands and pull so fabric is flat and looks like diagram below

Bottom corner view



with bottom corners dot to dot•

Step 4

Cut a strip of fabric 3" x 18" for the handle



Step 5

Fold handle in half length wise and zig zag sew or serge the open edge

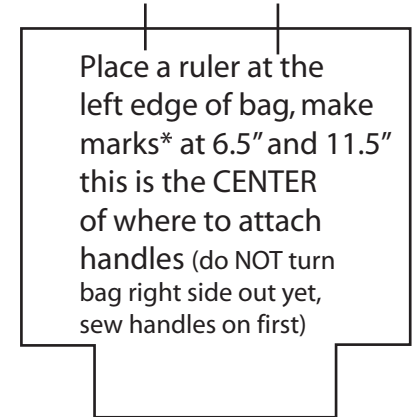
(you may sew the handle wrong sides together & turn it, but this is not necessary for a shopping bag!)



Step 6

Place a ruler at the left edge of bag, make marks* at 6.5" and 11.5" this is the CENTER of where to attach handles (do NOT turn bag right side out yet, sew handles on first)

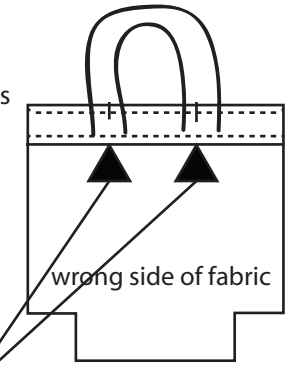
*You will want to make the marks for the handles on the right side of the fabric so you can still see them when you go to step 7.



Step 7

Fold over the top of bag about one inch and make a seam around the whole bag attaching the handles at the tip of the handle as you go. Sew around the whole bag again 1/8 inch from the top of the bag.

•Helpful hint: backstitch at handles when you go over them for reinforcement!



Turn bag right side out and go shopping! Enjoy! Make them as gifts/gift wrap for all occasions!